

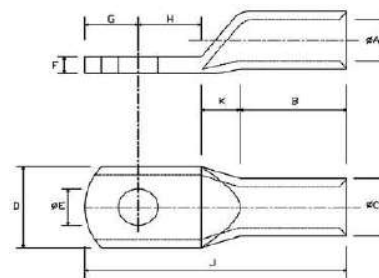


**AAISAHEB**  
*Quality & Timely Delivery*



# ALUMINIUM TUBULAR TERMINAL ENDS AS PER IS 8309

Aaisaheb Aluminium Tubular Terminal as per IS 8309 are made out of EC grade Aluminium, with purity 99.96% and having conductivity min 60% IACS and are designed as per IS 8309 : 1993 standard. These are used for terminating all sizes of cables. and chamfered mouth ensure easy cable insertion.



PRODUCT DESCRIPTION:ALUMINIUM TUBULAR TERMINAL ENDS AS PER IS 8309

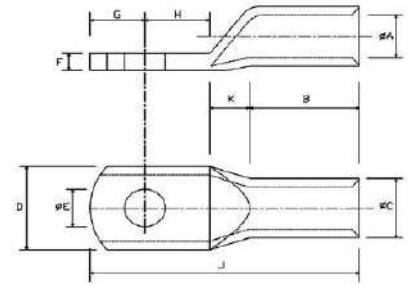
MATERIAL : EC GRADE ALUMINIUM  
MATERIAL STANDARD : IS 5082 : 1981  
RANGE : 2.5 TO 1000 SQMM



AI CAT NO.	Size mm <sup>2</sup>	Stud Hole E	A	C	D	F	B	K	H	G	J
AIALS-101	2.5	3.2	2	5.5	6.6	3.5	7	3	4	4	18
AIALS-102	2.5	3.7	2.6	5.5	7	2.9	7	3	4	4	18
AIALS-103	4	4.2	2.9	5.5	7.2	2.6	7	3	4	4	18
AIALS-104	4	5.2	2.9	5.5	12	1.2	7	4	7	6	23
AIALS-105	6	5.2	3.5	5.5	7.5	2	7	4	7	6	24
AIALS-106	6	6.5	3.5	5.5	12	1.1	7	4	7	6	24
AIALS-107	10	4.2	3.8	6.2	8.4	2.4	7	4	9	8	28
AIALS-108	10	6.4	4.4	7.2	9.7	2.8	9	4	9	8	30
AIALS-109	10	8.2	4.4	7.2	15	1.8	9	4	9	8	30
AIALS-110	16	6.4	5.4	8.3	11.4	2.9	13	4	11	9	37
AIALS-111	16	8.2	5.4	8.3	11.4	2.9	13	4	11	9	37
AIALS-112	16	10.2	5.4	8.3	18	1.8	13	4	11	9	37
AIALS-113	25	6.4	7	9.7	13.7	2.7	16	7	11	10	44
AIALS-114	25	8.2	7	9.7	13.7	2.7	16	7	11	10	44
AIALS-115	25	10.2	7	9.7	20	1.7	16	7	11	10	44
AIALS-116	25	12.7	7	9.7	20	1.7	16	7	11	10	44
AIALS-117	35	6.4	8	10.8	15.4	2.8	18	7	11	11	47
AIALS-118	35	8.2	8	10.8	15.4	2.8	18	7	11	11	47
AIALS-119	35	10.2	8	10.8	20	2.1	18	7	11	11	47
AIALS-120	50	8.2	9.3	13	18.3	3.7	22	8	13	11	54
AIALS-121	50	10.2	9.3	13	23	2.8	22	8	13	11	54
AIALS-122	50	12.7	9.3	13	23	2.8	22	8	13	11	54
AIALS-123	70	8.2	11.4	15.6	22.3	4.4	26	8	13	13	60
AIALS-124	70	10.2	11.4	15.6	22.3	4.4	26	8	13	13	60
AIALS-125	70	12.7	11.4	15.6	22.3	4.4	26	8	13	13	60
AIALS-126	95	10.2	13	17.4	24.6	4.2	28	8	14	14	64
AIALS-127	95	12.7	13	17.4	24.6	4.2	28	8	14	14	64
AIALS-128	95	16.2	13	17.4	24.6	4.2	28	8	14	14	64
AIALS-129	120	10.2	14.7	19.6	28.2	4.6	32	11	15	15	73
AIALS-130	120	12.7	14.7	19.6	28.2	4.6	32	11	15	15	73
AIALS-131	120	16.2	14.7	19.6	28.2	4.6	32	11	15	15	73
AIALS-132	150	10.2	16.5	21.5	30.9	5	34	11	17	17	79

# ALUMINIUM TUBULAR TERMINAL ENDS AS PER IS 8309

Aaisaheb Aluminium Tubular Terminal as per IS 8309 are made out of EC grade Aluminium, with purity 99.96% and having conductivity min 60% IACS and are designed as per IS 8309 : 1993 standard. These are used for terminating all sizes of cables. and chamfered mouth ensure easy cable insertion.



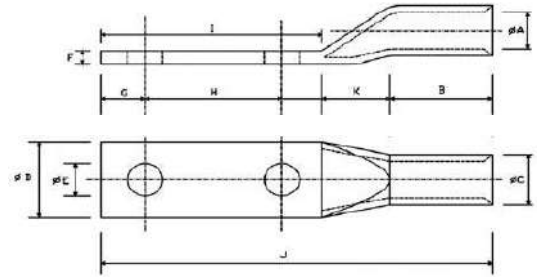
PRODUCT DESCRIPTION: ALUMINIUM TUBULAR TERMINAL ENDS AS PER IS 8309

MATERIAL : EC GRADE ALUMINIUM  
MATERIAL STANDARD : IS 5082 : 1981  
RANGE : 2.5 TO 1000 SQMM

AI CAT NO.	Size mm <sup>2</sup>	Stud Hole E	A	C	D	F	B	K	H	G	J
AIALS-133	150	12.7	16.5	21.5	30.9	5	34	11	17	17	79
AIALS-134	150	16.2	16.5	21.5	30.9	5	34	11	17	17	79
AIALS-135	185	10.2	18.5	24	34.6	5.5	36	12	18	18	84
AIALS-136	185	12.7	18.5	24	34.6	5.5	36	12	18	18	84
AIALS-137	185	16.2	18.5	24	34.6	5.5	36	12	18	18	84
AIALS-138	240	12.7	21.3	28.2	40.6	6.6	44	14	22	22	102
AIALS-139	240	16.2	21.3	28.2	40.6	6.6	44	14	22	22	102
AIALS-140	300	16.2	24.1	31.2	44.2	7	47	14	27	27	115
AIALS-141	300	20.3	24.1	31.2	44.2	7	47	14	27	27	115
AIALS-142	400	20.3	27.1	35.7	51.5	8.5	56	13	31	30	130
AIALS-143	500	20.3	30.2	41	58.7	10	60	15	33	32	140
AIALS-144	625	20.3	35.2	46	66	10	69	16	35	34	154
AIALS-145	800	---	39	51	73	12	77	25	39	39	180
AIALS-146	1000	---	43.5	57	81.9	13.5	100	30	45	45	220

# ALUMINIUM LONG PALM DOUBLE STUD TUBULAR TERMINAL ENDS

Aaisaheb long palm double stud tubular terminal ends, which also known as "Non-Rotating Terminals" are manufactured with EC grade aluminium having conductivity Min. 60% IACS. Two hole ensures non rotation in equipments such as transformer & Moving equipments where vibration is critical. The hole size punch according as per requirement.



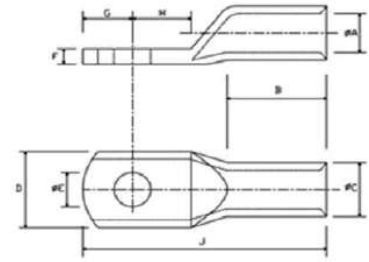
PRODUCT DESCRIPTION: ALUMINIUM LONG PALM DOUBLE STUD TUBULAR TERMINAL

MATERIAL : EC GRADE ALUMINIUM  
MATERIAL STANDARD : IS 5082 : 1981  
RANGE : 25 TO 300 SQMM

AI CAT NO.	Size mm <sup>2</sup>	E	A	C	D	F	B	G	H	I	J
AIALPD-147	25	8.2	7	9.7	13.7	2.7	21	11	20	-	70
AIALPD-148	35	8.2	8	10.8	15.4	2.8	21	11	20	-	70
AIALPD-149	50	10.3	9.3	13	20	3.5	30	13	40	65	115
AIALPD-150	70	10.3	11.6	16	24	4.4	30	13	40	65	115
AIALPD-151	95	10.3	12.9	17.1	25	4.2	30	13	40	65	115
AIALPD-152	120	13	15	19.6	28	4.6	50	20	40	81	145
AIALPD-153	150	13	16.5	21.5	31	5.3	50	20	40	90	156
AIALPD-154	185	13	18.5	24	34	6	50	20	40	90	156
AIALPD-155	240	13	21	27	39	6	50	20	40	90	156
AIALPD-156	300	13	24	31	44	6.8	50	20	40	90	156

# ALUMINIUM LONG BARREL STUD TUBULAR TERMINAL ENDS FOR XLPE IS 8309 : 1993

Aaisaheb Aluminium Tubular Terminal as per IS 8309 are made out of EC grade Aluminium, with purity 99.96% and having conductivity min 60% IACS and are designed as per IS 8309 : 1993 standard. These are used for terminating all sizes of cables and chamfered mouth ensure easy cable insertion.



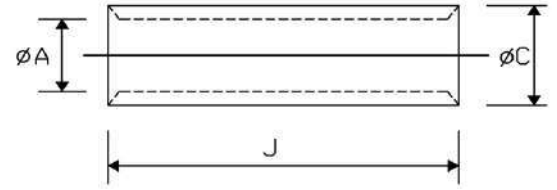
PRODUCT DESCRIPTION: ALUMINIUM LONG BARREL STUD TUBULAR TERMINAL ENDS FOR XLPE IS 8309:1993

MATERIAL : EC GRADE ALUMINIUM  
MATERIAL STANDARD : IS 5082 : 1981  
RANGE : 16 TO 630 SQMM

AI CAT NO.	Size mm <sup>2</sup>	Stud Hole E	A	C	D	F	B	H	G	J
AIAX-157	16	8.4	5.6	10	16	3.2	32	10	8	57
AIAX-158	25	8.4	6.8	12	16	4.9	32	10	8	57
AIAX-159	35	10.5	8	14	20	5.7	42	12	10	72
AIAX-160	50	10.5	9.3	16	21.5	6.6	42	12	10	72
AIAX-161	70	13	11.6	18.5	25	7	52	15	13	90
AIAX-162	95	13	12.4	22	30	8.4	56	15	13	95
AIAX-163	120	13	14.7	23	31.5	8	56	20	15	102
AIAX-164	150	13	16.4	25	34.5	8.3	60	20	15	108
AIAX-165	185	17	18.4	28.5	39.5	10	60	20	15	110
AIAX-166	240	17	21	32	44.5	10.6	70	24	19	130
AIAX-167	300	17	23.4	34	47.5	10.4	70	24	19	130
AIAX-168	400	17	26	38.5	53.5	12.1	75	24	19	138
AIAX-169	500	17	29	44	60.5	14.6	80	24	22	148
AIAX-170	630	17	34	50	69.5	15.6	90	28	26	170

# ALUMINIUM IN-LINE CONNECTOR

Aaisaheb Aluminium Tubular In-Line connector are designed for jointing low voltage conductors and made out of EC grade-aluminium, with purity 99.96% and having conductivity min 60% IACS and are designed as per IS 8309 : 1993 standard. These lugs comes with chamfer which ensure easy insertion of cable.



PRODUCT DESCRIPTION: ALUMINIUM TUBULAR IN-LINE CONNECTOR

MATERIAL : EC GRADE ALUMINIUM

STANDARD : IS 5082 : 1981


RANGE : 2.5 TO 1000 SQMM


AI CAT NO.	Size mm <sup>2</sup>	A	C	J
AIALS-171	2.5	2	5.5	16
AIALS-172	2.5	2.6	5.5	16
AIALS-173	4	2.9	5.5	16
AIALS-174	6	3.5	5.5	16
AIALS-175	10	3.8	6.2	20
AIALS-176	10	4.4	7.4	20
AIALS-177	16	5.4	8.3	26
AIALS-178	25	7	9.7	35
AIALS-179	35	8	10.8	40
AIALS-180	50	9.3	13	45
AIALS-181	70	11.6	16	55
AIALS-182	95	12.9	17.1	60
AIALS-183	120	15	19.6	65
AIALS-184	150	16.5	21.2	70
AIALS-185	185	18.5	24	75
AIALS-186	225	21	27	85
AIALS-187	240	22	28.6	90
AIALS-188	300	25	32	100
AIALS-189	400	29	37.5	115
AIALS-190	500	31	41	125
AIALS-191	630	36	46	140
AIALS-192	800	39	51	160
AIALS-193	1000	43.5	57	210




**AAISAHEB**

*Quality & Timely Delivery*

 +91 9763790417

 aaisahebindustry2019@gmail.com

 Plot No. 73, Shree Guru Gajanan Industries,  
Vilholi Road, MIDC Ambad, Nashik